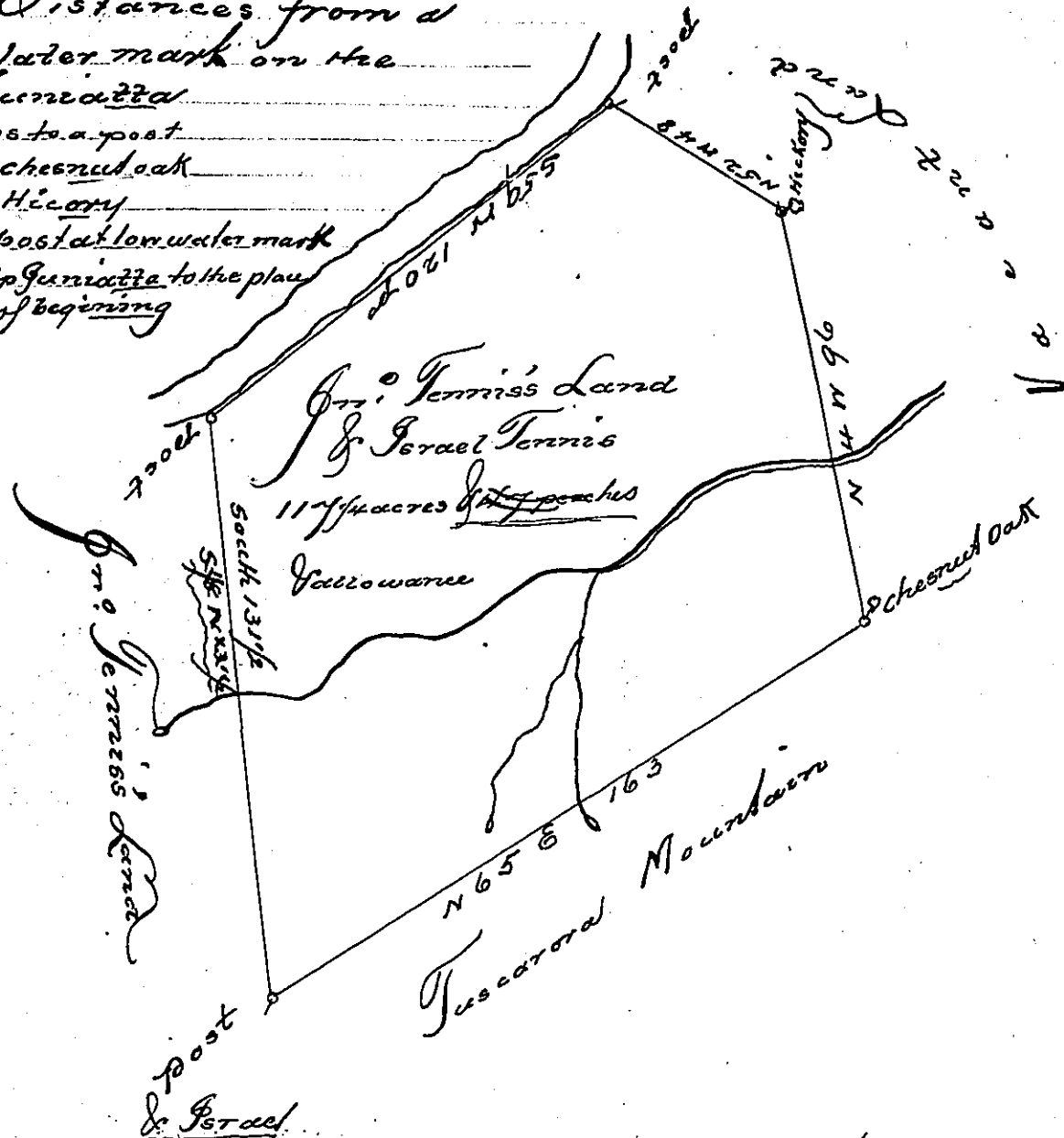


Courses & Distances from a post at low water mark on the South side Juniata

- S. 7 N. 131 1/2 ps to a post
- N. 65 E. 163 chestnut oak
- N. 4 N. 96 Hickory
- N. 52 W. 48 post at low water mark
- S. 59 W. 120 Up Juniata to the place of beginning



The Draught of Jno. Tannis Land in Millford Township Cumberland County containing one hundred & seventeen acres of perches of arable  
 Dec. 26<sup>th</sup> 1781  
 J. Harris

I find a wt. to Jno. & Israel Tannis 13<sup>th</sup> March 1776

IN TESTIMONY that the above is a copy of the original remaining on file in the Department of Internal Affairs of Pennsylvania, made conformably to an Act of Assembly approved the 16th day of February, 1833, I have hereunto set my Hand and caused the Seal of said Department to be affixed at Harrisburg, this Seven<sup>th</sup> day of January 1902,

*James W. Latta*  
 Secretary of Internal Affairs.